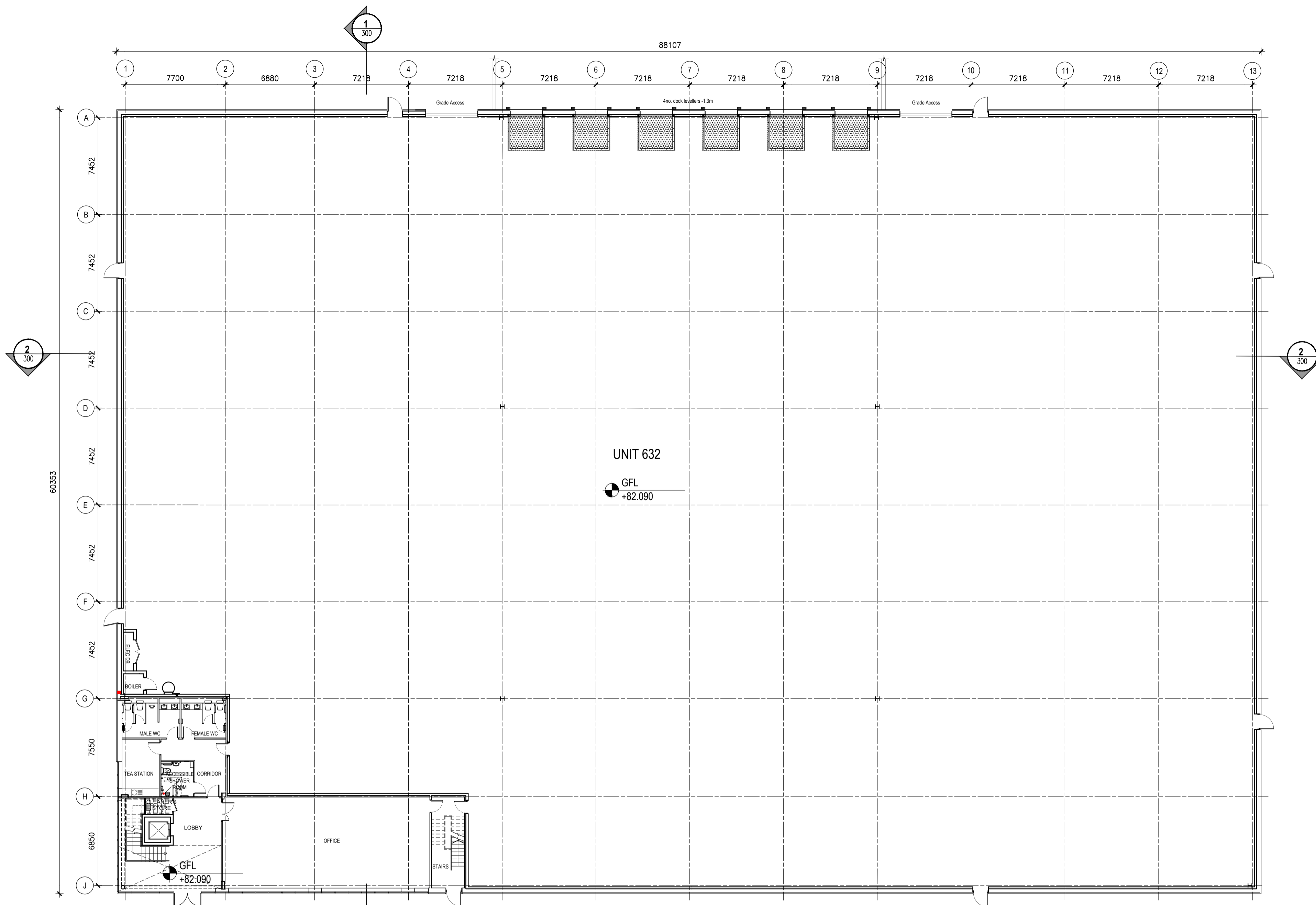


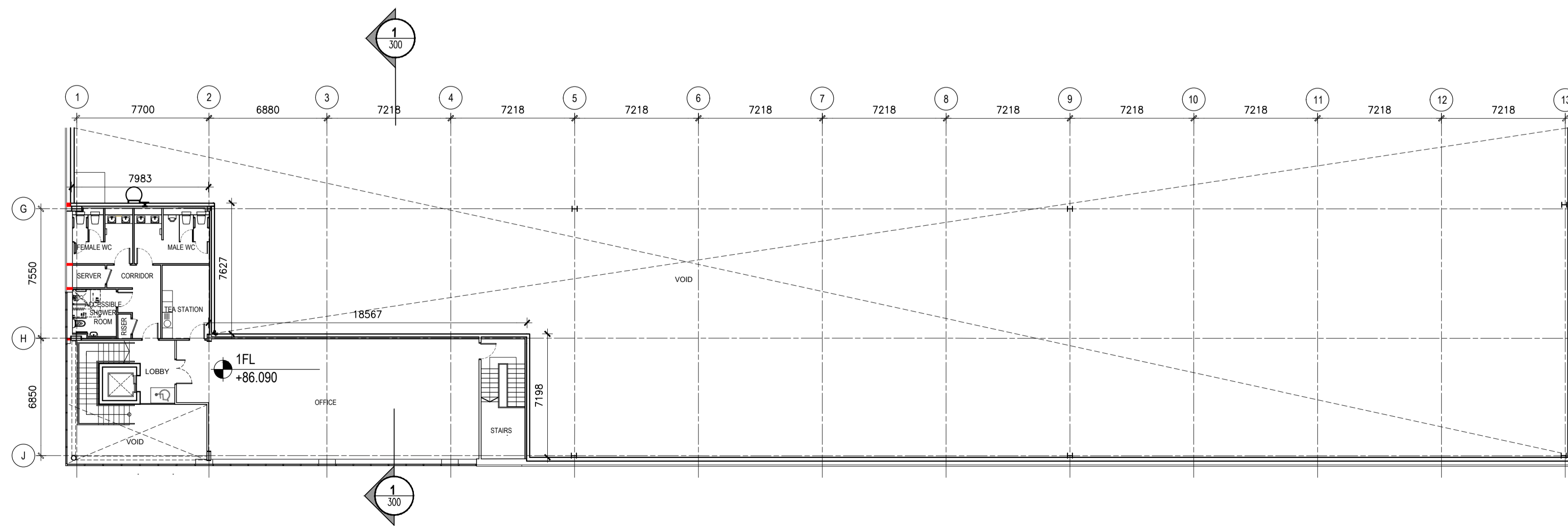
COPYRIGHT:  
The design and details shown on this drawing are applicable to their project only and may not be reproduced in whole or in part or be used for any other project or purpose without the written permission of TOT Architects with whom copyright resides.

DO NOT SCALE from this drawing. Use figured dimensions.  
Contractor to check all dimensions on site prior to commencement of works. Any discrepancies are to be referred to the ARCHITECT.

KEY PLAN:



**1 PROPOSED GROUND FLOOR PLAN**  
PA-200  
Scale:1:200 @A1



**2 PROPOSED FIRST FLOOR PLAN**  
PA-200  
Scale:1:200 @A1

**Gross Internal Area Schedule:**

Office GFL -	193m <sup>2</sup>
Office 1FL -	228m <sup>2</sup>
Total Office -	421m <sup>2</sup>
Warehouse -	4979m <sup>2</sup>

Total GIA = 5400m<sup>2</sup>

**REVISIONS**

NO.	DATE	BY	DESCRIPTION

22.07.2019 \* IK NW ISSUED FOR PLANNING  
DATE REV. BY: CHECKED DESCRIPTION

**TOT Architects**

49 Upper Mount Street T + 353 1 703 7800 W www.totarch.ie  
Dublin 2, Ireland M + 353 866005670 I info@totarch.ie

PROJECT: **Hantise Ltd.**  
Warehouse/Logistics/Light Industrial Unit  
Northwest Business Park  
STAGE: **PLANNING**

DRAWING TITLE:  
**FLOOR PLANS  
PROPOSED UNIT 632**

DATE: JULY 2019 DRAWING NO: **PA-200**  
SCALE: 1:200 @ A1  
DRAWN: IK  
CHECKED: NW SHEET SIZE: REVISION:  
JOB NO: 19-37  
FILE NAME: 19-37-PA-200

A1 \*